

CURB APPEAL PROJECT BEAUTIFUL BORDERS



INTRODUCTION

As the speed of redevelopment picks up in our city, the growers that Keep Growing Detroit (KGD) serves will be under increasing pressure to provide some lasting curb appeal to their gardens and farms.

Great news! Over the summer, KGD collaborated with several talented landscape architects and ecosystem experts to create easy to install and manage ornamental gardens featuring perennial flowers that will be sure to wow neighbors while providing environmental benefits like attracting pollinators and beneficial insects, creating habitat for migratory birds and managing stormwater runoff.

These Beautiful Border designs are versatile. At 25 feet long by 7 feet wide they're designed to fit perfectly along the sidewalk or alley of a standard city lot. They would also look great along a garden pathway or the property line of an adjacent house. Working with more space than a single lot? No problem. Just repeat the design until the desired length is achieved!

Each design includes a detailed plant list and planting plans. If you have any trouble locating plants or materials, don't worry. Keep Growing Detroit is here to help! Also, for those on a tight budget, the cost for implementation ranges from under \$500 to \$1,000 - even less if donated or divided perennials are utilized.

This project would not have been possible without the landscape architects that will be introduced on the next page. They generously donated their time to attend meetings and create designs. Every step along the way the designers received ideas and feedback from Cyndi Ross from the Friends of the Rouge, a native plant and water management expert and Rebecca Tonietto from the Smith Fellowship in Conservation Biology, a bee and pollination expert.

IT'S PLANTING TIME!

In the coming year Keep Growing Detroit will be helping to facilitate the installation of dozens of Beautiful Borders in Garden Resource Program member gardens and farms across Detroit. If you're interested in partnering with us to host or volunteer at a planting check out the back page of this document. You'll find our contact information there along with resources for planting and maintenance tips and details for related upcoming events!



KEEP GROWING DETROIT

MEET THE DESIGNERS

OMAR DAVIS



Omar currently works as a Landscape Designer in the City of Detroit's Planning and Development Department focusing on projects in the city's East Region. Omar hails from the great city of Cleveland, Ohio. He studied Earth Sciences at Wesleyan University and worked in New York City for 4 years before heading up to Boston to study landscape architecture at Harvard University's Graduate School of Design.

SARAH HAYOSH



Sarah has called Detroit home for nearly 10 years, and much of that time she has been fortunate to work hand-in-hand with creative and resilient Detroiters to design and create public greenspaces that build connections to nature, reduce blight, grow fresh food, and bring community members together. She is a co-founder of Keep Growing Detroit and is currently a Designer and Project Manager at the Detroit Collaborative Design Center. She studied Economics and Environmental Studies at the University of Michigan, and Landscape Architecture at the University of Minnesota in Minneapolis.

UJIJJI DAVIS



Ujiji is a talented Landscape Designer and has worked at SmithGroupJJR since 2015. She currently works on urban design projects based in Detroit, specializing in master planning, community engagement and strategic implementation. Before her work with SmithGroupJJR, she worked at the Central Park Conservancy in NYC, gaining tremendous experience in garden design, playground design and overall park management. She is excited to contribute to Keep Growing Detroit with the Curb Appeal Project.

JEFF KLEIN

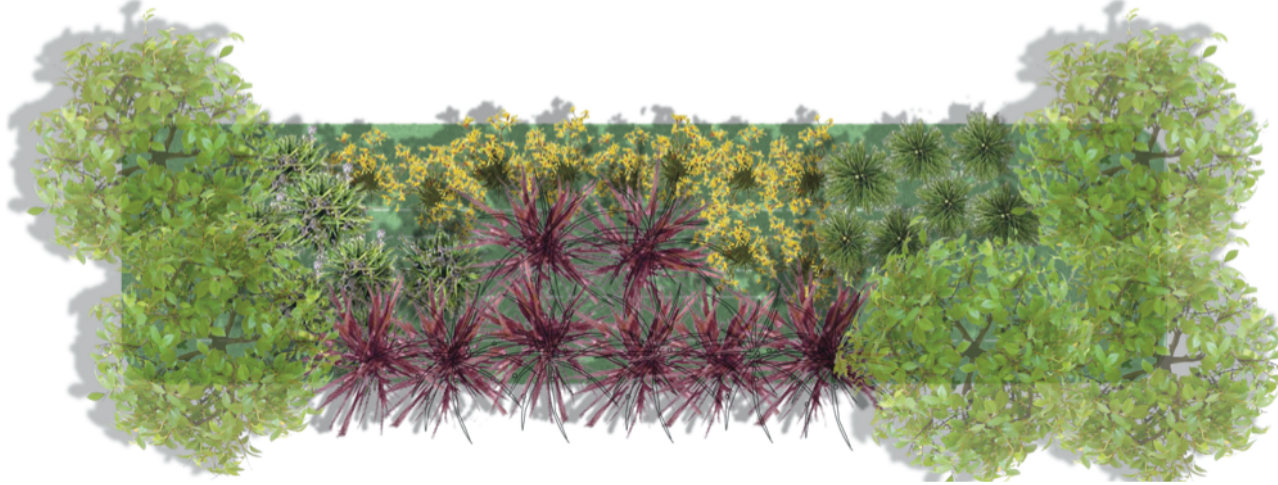


Jeff is a landscape architect with over 20 years of experience in landscape design and construction. Jeff also founded Detroit Farm and Garden, a retail store located in Mexican Town in Detroit and supplies landscape, farm, garden and feed supplies to area residents, contractors, urban farmers and non-profit organizations. Jeff has been living and working in Detroit's communities for over 20 years and views the landscape as a powerful tool of change that can promote social and environmental cohesion while transforming and healing land, people, and communities.

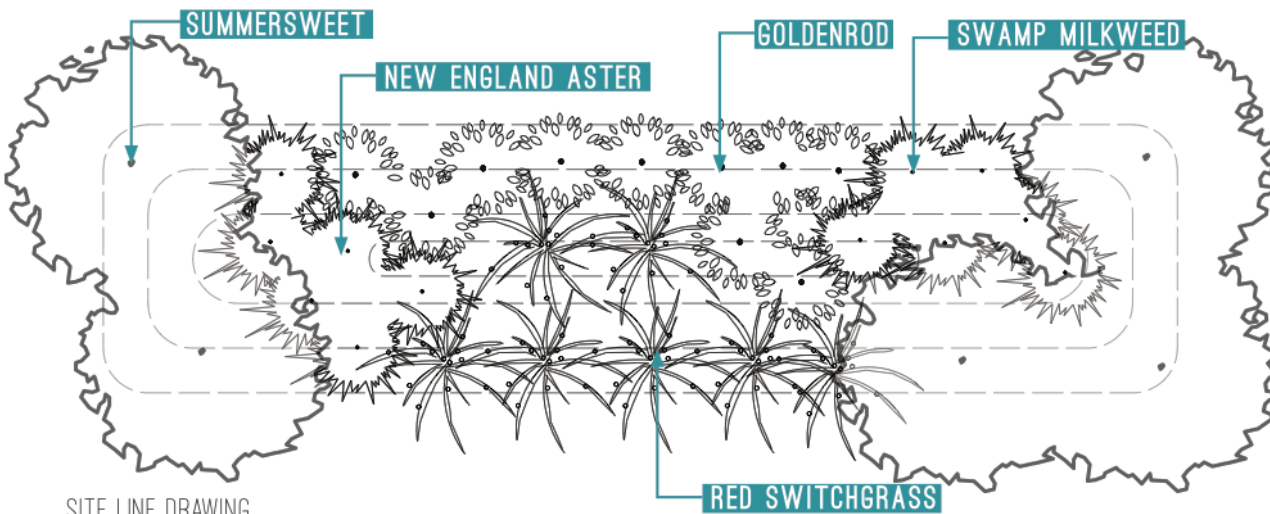


BUTTERFLY RAIN GARDEN

This rain garden design allows residents to bring nature to their home all year round, particularly by attracting migratory butterflies. This garden shows its strongest palette in the spring, summer and fall, supporting the important butterfly and pollinator ecosystem. The plot is designed for an area no larger than 7' x 25', with a 12 inch depth. The area must have full or partial sun with sandy loam soil. This design requires minor maintenance with weekly watering and some weeding as necessary. Choose this garden and enjoy beautiful blooms and butterflies near your home!



ILLUSTRATIVE SITE DESIGN



SITE LINE DRAWING

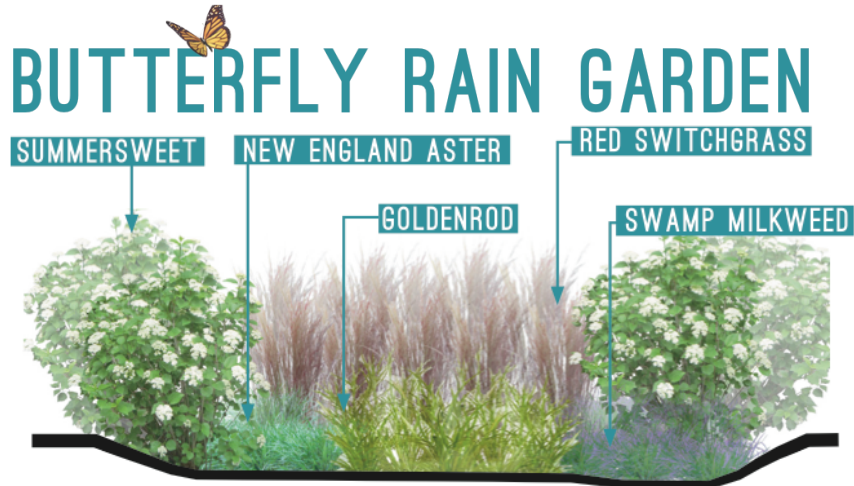


DESIGN BY UJIII DAVIS
SMITHGROUP JJR

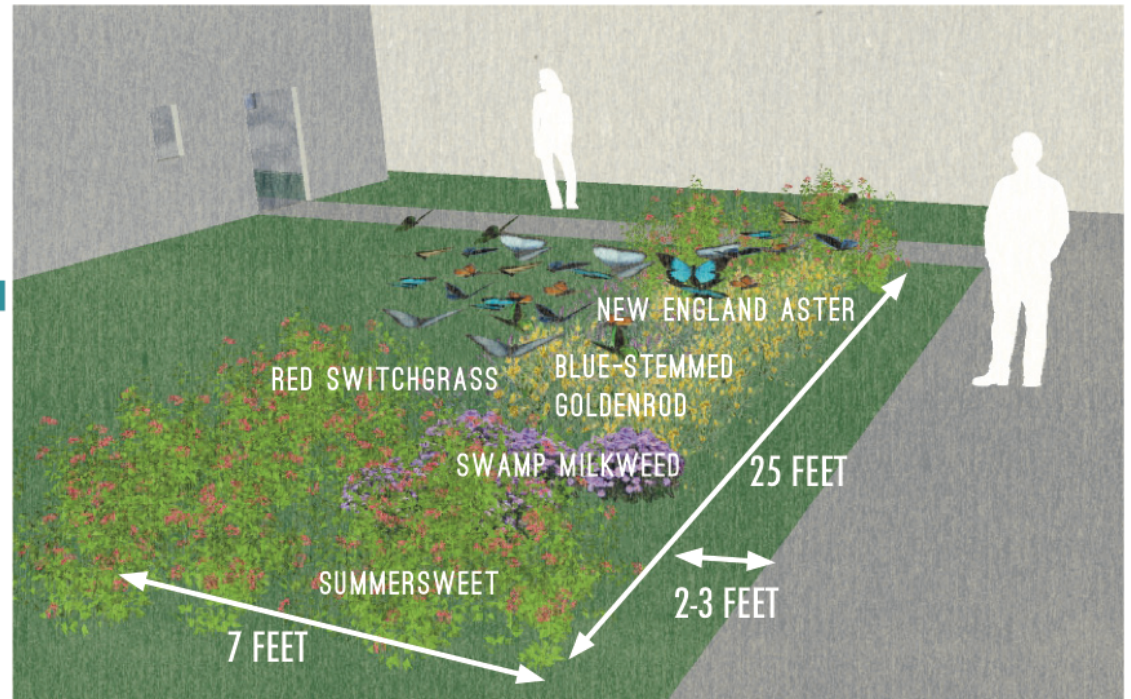


PLANTING LIST

Common Name	Botanic Name	Quantity	Spacing	Height	Bloom Time	Color
Swamp Milkweed	Asclepias incarnata	6	18" o.c.	4'-5'	July- August	Pink
Summersweet	Clethra alnifolia	5	12" o.c.	4'-8'	July- August	White
Red Switchgrass x "Shenandoah"	Panicum virgatum "Shenandoah"	8	12" o.c.	3'-4'	July- February	Red - Pink
Blue-stemmed Goldenrod	Solidago caesia	10	6" o.c.	1'-3'	August- September	Yellow
New England Aster	Symphotrichum novae-angliae	6	12" o.c.	3'-6'	August- September	Purple



DESIGN ELEVATION



ILLUSTRATION

BUDGET & TOOLS

Plants	Quantity	Price/Unit	Total
Summersweet	5	\$ 24.98	\$ 124.90
Swamp Milkweed	6	\$ 19.98	\$ 119.88
New England Aster	6	\$ 5.98	\$ 35.88
Blue-stemmed Goldenrod	10	\$ 5.98	\$ 59.80
Red Switchgrass	8	\$ 7.98	\$ 63.84
			\$ 404.30

Other Tools	Quantity	Price/Unit	Total
Shovel	1	\$ 25.98	\$ 25.98
Topsoil (2 cu bags)	20	\$ 6.00	\$ 120.00
Mulch (2 cu bags)	15	\$ 2.00	\$ 30.00
Recycling Bags (5 count)	2	\$ 1.98	\$ 3.96
Garden Hose (25 feet)	1	\$ 24.98	\$ 24.98
			\$ 204.92



TOTAL PRICE: \$609.22



TEXTURE PARTY!

This planting design is a party for your garden border! The plants were selected primarily for their texture, color and form beyond just the flower bloom - for entire plant, including its stems and foliage. The plants are grouped in clusters, but also intermingle with each other for several complementary combinations. The design can easily be extended for longer borders. Most of the plants are well suited for cut flower bouquets. Something is always blooming throughout the growing season to support bees and other pollinators. The seed heads of the Prairie Dropseed and Purple Coneflower can be left intact to provide birds with food during the winter. This garden design is best suited for areas receiving full sun, and can handle a variety of soil conditions. After a couple seasons of establishment, most of the plants (except Drumstick Flower) are fairly drought tolerant.



DESIGN BY: SARAH HAYOSH
DETROIT COLLABORATIVE DESIGN CENTER

GET TO KNOW THE PLANTS!



Allium & Prairie Dropseed



Purple Coneflower & Sea Holly



Prairie Dropseed & Purple Coneflower



Common Sage & Wormwood



Drumstick Flower & Sea Holly in bouquet

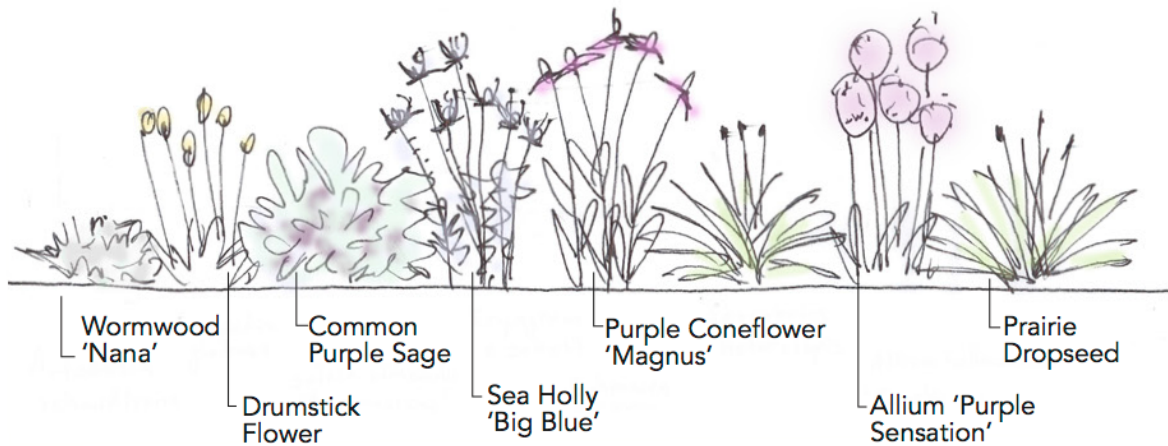


Wormwood

Common Name & 'Variety'	Scientific Name	Spacing	Height	Bloom Time/ Season of Interest	Color
Drumstick Flower	<i>Craspedia globosa</i>	6-12"	24"	June - Sept	Yellow Globe Blooms
Sea Holly 'Big Blue'	<i>Eryngium × zabelii</i>	18"	2-3'	June - Aug	Metallic Blue/Violet Bracts & Leaves
Purple Coneflower 'Magnus'	<i>Echinacea purpurea</i>	18"	2-3'	June - Sept	Hot Purple Blooms
Allium 'Purple Sensation'	<i>Allium hollandicum</i>	12"	2-3'	May - June	Purple Blooms
Prairie Dropseed	<i>Sporobolus heterolepis</i>	24"	2-3'	June - Feb	Green/Gold Foliage
Wormwood 'Nana'	<i>Artemisia schmidtiana</i>	12"	4-6"	May - Nov	Silver/Green Foliage
Common Sage (Purple)	<i>Salvia officinalis 'Purpurascens'</i>	18"	18-24"	May - Nov	Green & Purple Foliage

TEXTURE PARTY!

TEXTURE + FORM SKETCH



BUDGET

Quantity - Item: Cost

Perennials Plants (1 gallon pot unless noted)

- 9 - Allium 'Purple Sensation, bulbs: \$1 each
- 6 - Common Purple Sage: \$8 each
- 7 - Drumstick Flower, 1 seed pack: \$4 total
- 8 - Purple Coneflower 'Magnus': \$8 each
- 9 - Prairie Dropseed: \$8 each
- 15 - Sea Holly 'Big Blue': \$8 each
- 24 - Wormwood 'Nana', 6 inch pot: \$5 each

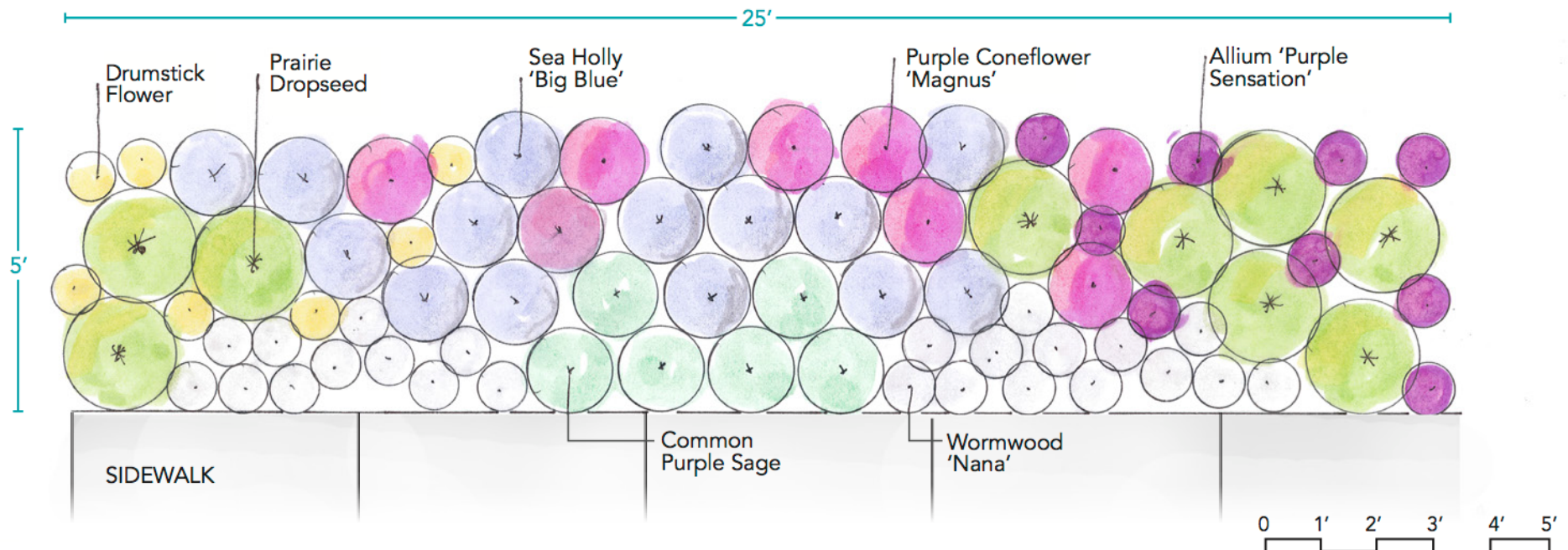
Cost Plant Material: \$437

1 - Cubic Yard Double Shredded Mulch, delivered, for 3" top layer: \$65

1 - Cubic Yard Compost, delivered, to work into garden bed: \$55

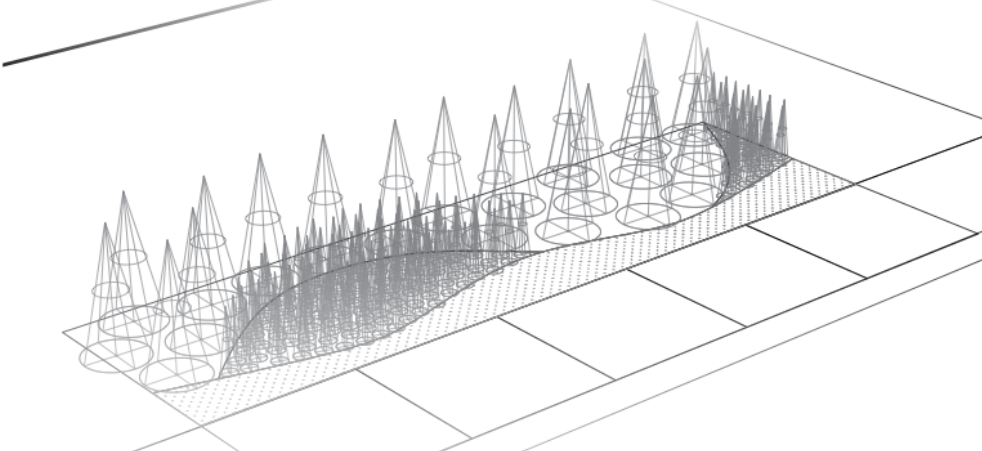
Total Material Cost: \$557

PLANTING PLAN



PLANT ~ ~ WAVES

DESIGN BY OMAR DAVIS
LANDSCAPE ARCHITECT
BASED IN THE CITY OF DETROIT



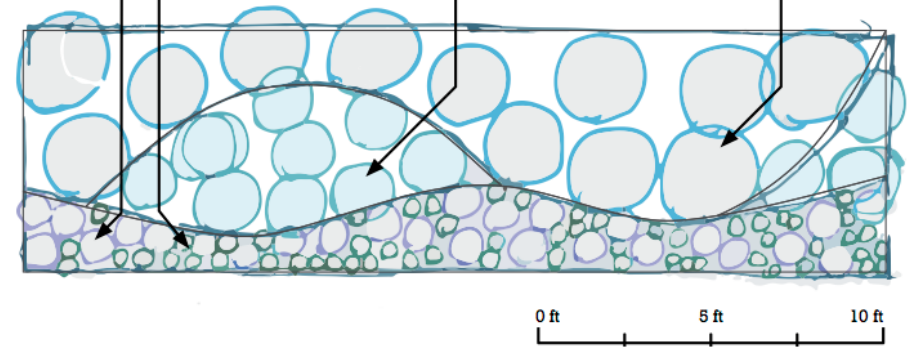
Each space is 25 ft wide by 7 ft deep, giving you a good buffer of space between the sidewalk and your own edible garden.

These flowing curb appeal designs are easy to arrange and plant. Try splashing the scene with waves of plantings for the passerby! Different configurations of species can be used in place, as well as different shapes. Defined edges start things out with clarity, but over time the species can blend together if you choose to let them. Use your imagination!

Draw out the different wave outlines on your planting area. Then lay out all the plants on the ground within their boundary, in a non-geometric pattern with regular spacing. As long as they are equidistant they will look coordinated en masse.



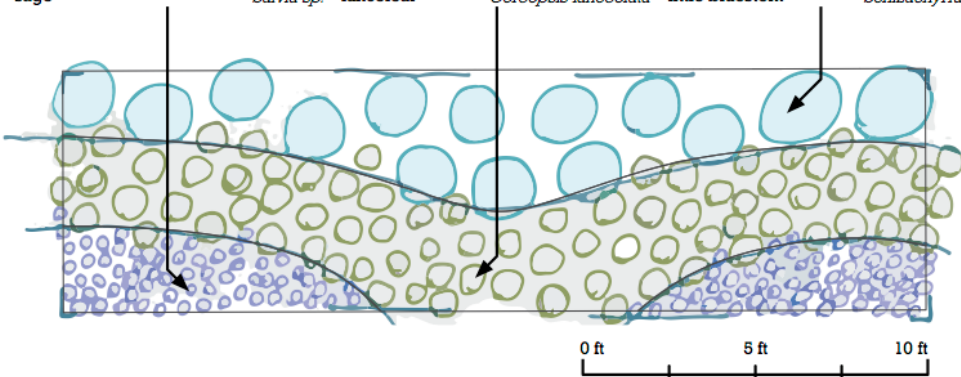
nodding onion
tufted hair grass
Allium cernuum
Deschampsia
orange coneflower
Rudbeckia fulgida
phlox
Phlox tuberosa



0 ft 5 ft 10 ft



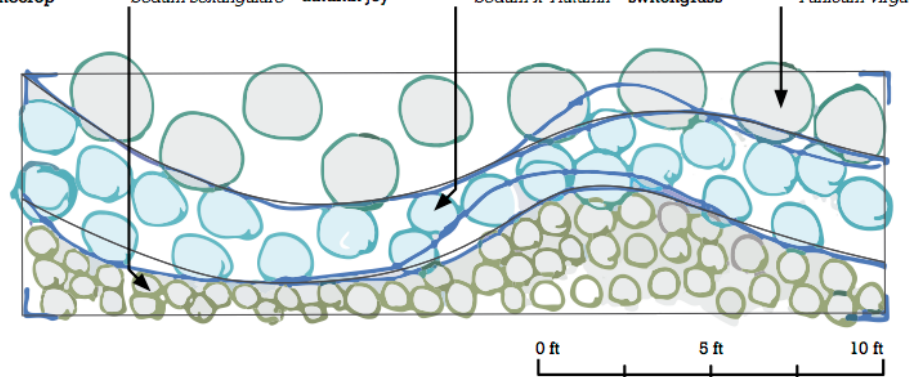
sage
Salvia sp.
lanceleaf
Coreopsis lanceolata
little bluestem
Schizachyrium



0 ft 5 ft 10 ft



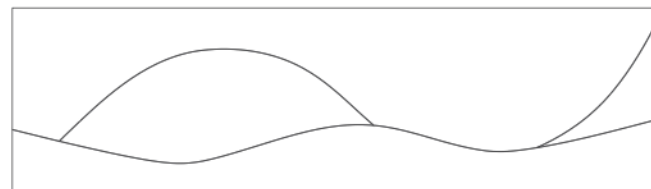
stonecrop
Sedum sexangulare
autumn joy
Sedum x 'Autumn
switchgrass
Panicum virgatum



0 ft 5 ft 10 ft

PLANT ~ ~ WAVES

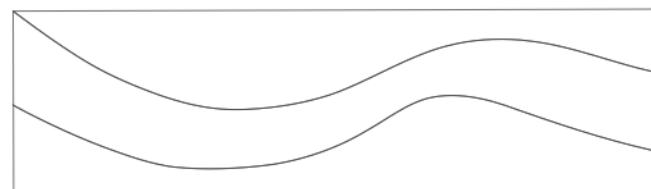
Each planting plan consists of a shorter plant closest to the sidewalk (4-5 dozen), medium-sized plants in the middle (2-3 dozen) and taller plants toward the back of the lot (~1 dozen). You should budget to acquire more small plants and less large plants.



#	Common Name	Genera	Species	Height	Width	Bloom Time	Color	Light	Moisture
AC	nodding onion	<i>Allium</i>	<i>cernuum</i>	1 - 1.5'	.25 - .5'	Jun - Aug	pink	full	dry - med
DC	tufted hair grass	<i>Deschampsia</i>	<i>cespitosa</i>	2 - 3'	1 - 2'	Jul - Sep	gold	part	med
RF	orange coneflower	<i>Rudebeckia</i>	<i>fulgida</i>	2 - 3'	2 - 2.5'	Jun - Oct	yellow	full	dry - med
PT	phlomis	<i>Phlomis</i>	<i>tuberosa</i>	3 - 5'	2 - 3'	May - Jul	lavender	full	med



#	Common Name	Genera	Species	Height	Width	Bloom Time	Color	Light	Moisture
SX	sage	<i>Salvia</i>	<i>x suburba</i>	1 - 1.5'	.25 - .5'	Jun - Aug	blues	part	dry - med
CL	lanceleaf coreopsis	<i>Coreopsis</i>	<i>lanceolata</i>	1 - 2'	1 - 1.5'	May - Jul	yellow	full	dry - med
SC	little bluestem	<i>Schizachyrium</i>	<i>scoparium</i>	2 - 4'	1.5 - 2'	Aug - Feb	purple-gold	full	dry - med

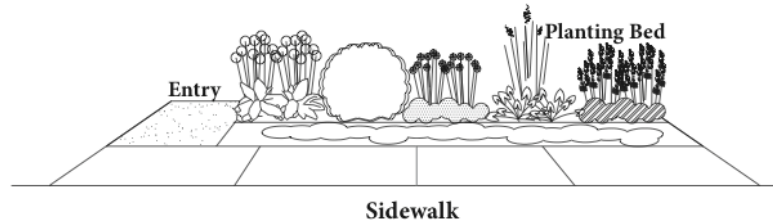


#	Common Name	Genera	Species	Height	Width	Bloom Time	Color	Light	Moisture
SS	stonecrop	<i>Sedum</i>	<i>sexangulare</i>	.25 - .5'	1 - 2'	Jun - Aug	yellow	full	dry - med
SA	autumn joy	<i>Sedum</i>	<i>x 'Autumn Joy'</i>	1.5 - 2'	1.5 - 2'	Sep - Oct	pink	full	dry - med
PV	switchgrass	<i>Panicum</i>	<i>virgatum</i>	3 - 6'	2 - 3'	Jul - Feb	pink	part	med - wet

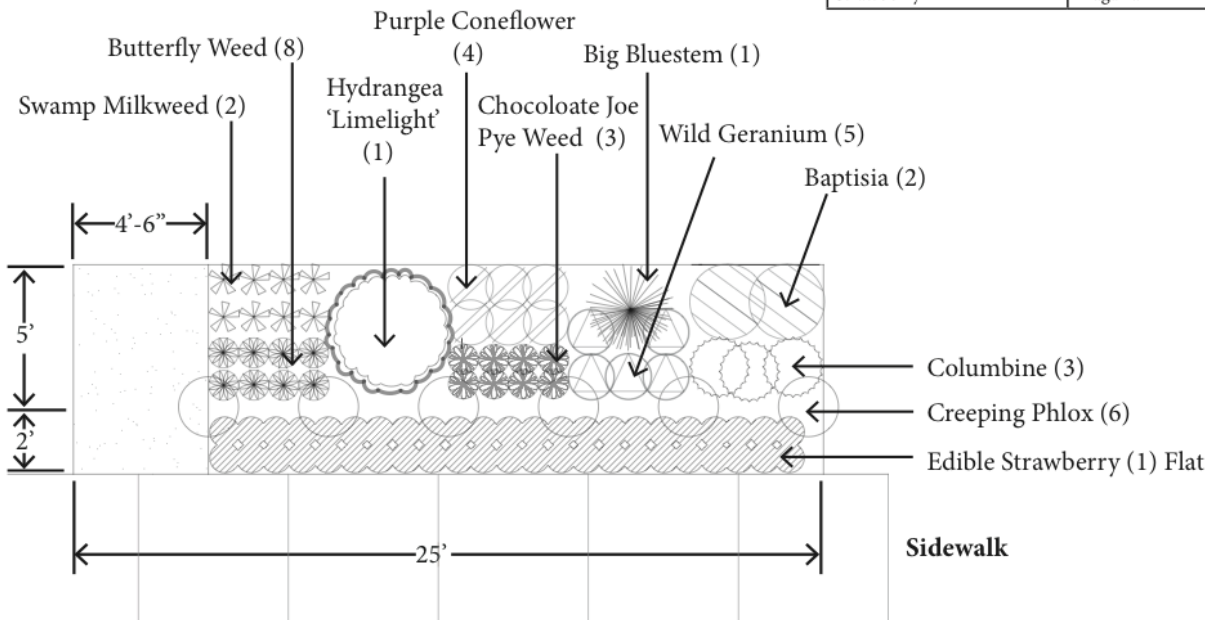
Mix and Match

Get the most out of your garden border by adding some “Curb Appeal”. The **Mix and Match!** border is designed to give you color and texture throughout the season while providing a beautiful edge along your sidewalk. The design allows you the flexibility to move the plants, entry and fencing to where you want. Plantings attract butterflies, birds, bees and other pollinators and work well in a sunny environment with moderate water. Customize your **Mix and Match!** Border by adding a fence, bee condo, bird house or more!

Border Planting



Plant Layout



Plant List

Common Name	Plant Name	Bloom Time	Height		Color / Texture
Swamp Milkweed	Asclepis incarnata	July/August	4-5'	2-3'	White to Pink Flower Clusters
Butterfly Weed	Asclepis tuberosa	June/August	1-2.5'	1-1.5'	Bright Orange Flower Clusters
Hydrangea 'Limelight'	Hydrangea 'Limelight'	July/September	6'	6'	Large White Ball Flower Cluster
Echinacea 'Variety'	Echinacea purpurea	June/August	2'-5'	1.5-2'	Single Purple Cone Shape Flower
'Chocolate Joe Pye Weed	Eupatorium rugosum	Sept/Oct	3'	2'	Delicate White Flower Clusters
Big Bluestem	Andropogon gerardivi	Sept/Oct	4-6'	2-3'	Blue Upright Narrow Leaves
Wild Geranium	Geranium maculatum	April / May	1-2'	1.5'	Singular Light Purple Flowers
Baptisia 'variety'	Baptisia australis	May / June	3-4'	3-4'	Many Colors to Choose From
Columbine 'variety'	Aquilegia canadensis	April / May	2-3'	1-1.5'	Many Colors to Choose From
Phlox subulata	Phlox subulata	May	.5'	1-2'	Pink, White or Purple
Strawberry	Fragaria	May / August	.5'	1'	Yummy Fruit

Cost

	Quantity	Cost Low	Cost High
Plant Cost	1 gallon Perennials 36" Shrub	\$500	\$700
Compost @ 4"	2 yards + Delivery	\$90	\$130
Mulch @ 4"	2 yards + Delivery	\$110	\$140
Fence	Length And Material Varies	\$200	\$1120
Entry Path @ 4"	.5 yard + Fabric + Edging + Delivery	\$80	\$120
TOTAL		\$980	\$2210

Note

PROJECT COSTS CAN VARY DEPENDING ON MATERIAL NEEDS, INITIAL PLANT SIZES AND DELIVERY REQUIREMENTS. ABOVE COSTS ARE MEANT TO HELP WITH PROJECT PLANNING AND REFLECT A RANGE OF BUDGET.

DESIGNED BY:
JEFF KLEIN with  1759 21st. St. Detroit Michigan 48216
LANDSCAPE ARCHITECTURE 313.655.2344
August 5, 2017 "Supporting the Local Landscape"
detroitfarmandgarden.com

Mix and **Match**




Swamp Milkweed



Butterfly Weed



Hydrangea 'Limelight'



Big Bluestem



Baptisia



Echinacea



Chocolate 'Jope Pye Weed'



Wild Geranium



Phlox

Mix and Match!

All these plants will do well in full to partial sun and dry to medium soil moisture.

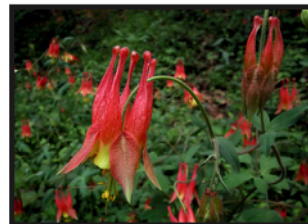
Look these plants up at:

<http://www.missouribotanicalgarden.org/plantfinder/plantfindersearch.aspx>

Edible Strawberry



Columbine



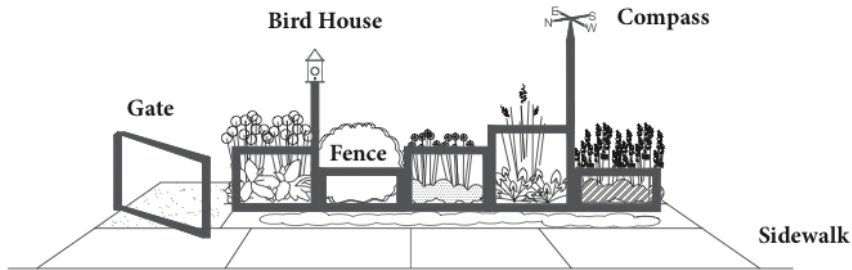
DESIGNED BY:
JEFF KLEIN with  1759 21st. St. Detroit Michigan 48216
 LANDSCAPE ARCHITECTURE 313.655.2344
 August 5, 2017 "Supporting the Local Landscape"
 detroitfarmandgarden.com

Mix and Match

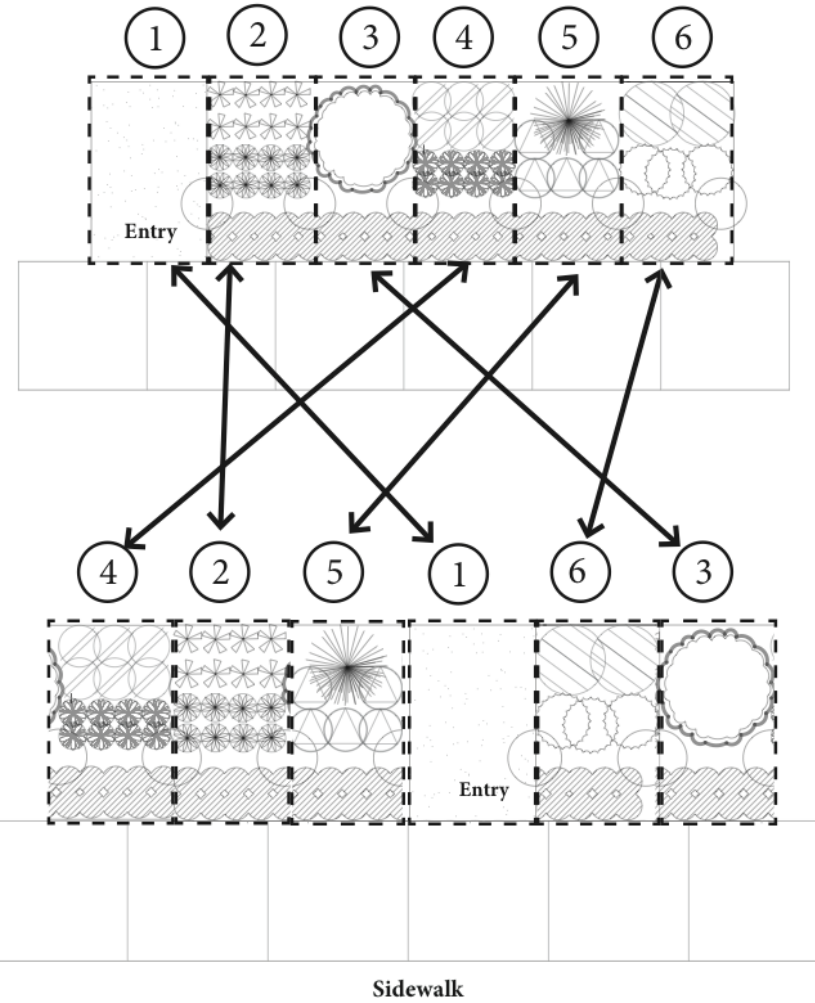
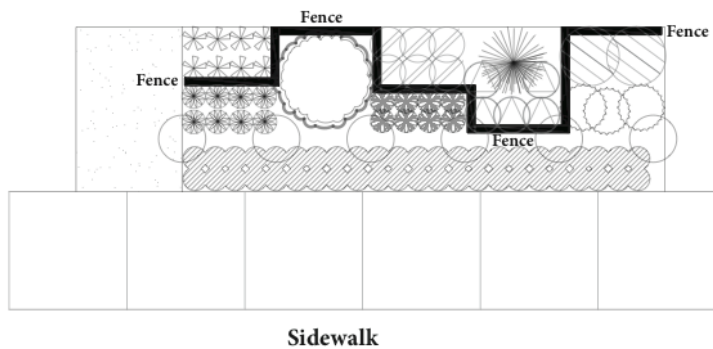


Have Fun **Mixing** and **Matching!**

Add Stuff!



Design Your Own Fence Pattern!



Mix and Match!

Each numbered planting tile is approximately 4' wide.
 Move them around to create your own layout.
 Add a Fence, Bee Condo, Insect Box and More!
 Add Signage or Art!



DESIGNED BY:
JEFF KLEIN with 
 LANDSCAPE ARCHITECTURE August 5, 2017
 1759 21st. St. Detroit Michigan 48216 313.655.2344
 "Supporting the Local Landscape" detroitfarmandgarden.com



UPCOMING EVENTS

COMMUNITY WORKDAY on Saturday, October 14th at Fields of Plenty, 847 Clairmount from 10am to noon. We'll be installing the first curb appeal planting site. It's going to be a Texture Party!

GRP PERENNIAL SWAP & DISTRIBUTION on Tuesday, October 24th at the Plum Street Market Garden, 2202 Third Street (across from the MGM Grand parking garage) from 5pm to 7pm. Learn how perennial plants can add beauty and resiliency in the garden while taking a load off of your gardening to do list! Bring divided perennials to swap in well labeled plastic bags. If you don't have perennials to swap, no problem! There will be plenty of donated perennials for active Garden Resource Program members to take home!

MORE PLANTING DATES COMING SOON!

HELPFUL LINKS & RESOURCES

KEEP GROWING DETROIT

<http://detroitagriculture.net/resources/>



keepgrowingdetroit.org | (313) 757-2635 | info@keepgrowingdetroit.org

